



Monroe County

Climate Adaptation & Resiliency Plan

Advancing Preparedness to Climate Change in Monroe County

Led by the Monroe County Department of Environmental Services, the Climate Adaptation and Resiliency Plan (CARP) will assess the vulnerability of the County's infrastructure, programs, and human and environmental services to a changing climate. After this assessment, the plan will outline specific policies, programs, projects, and partnerships that work together to create a clear and practical path for building a stronger and more resilient Monroe County for everyone.



The CARP complements the County's Climate Action Plan (CAP). While the CAP focuses on **mitigating** climate change impacts by reducing greenhouse gas emissions, the CARP will be focused on better preparing the County to **adapt to** climate-related hazards for a more resilient Monroe County.

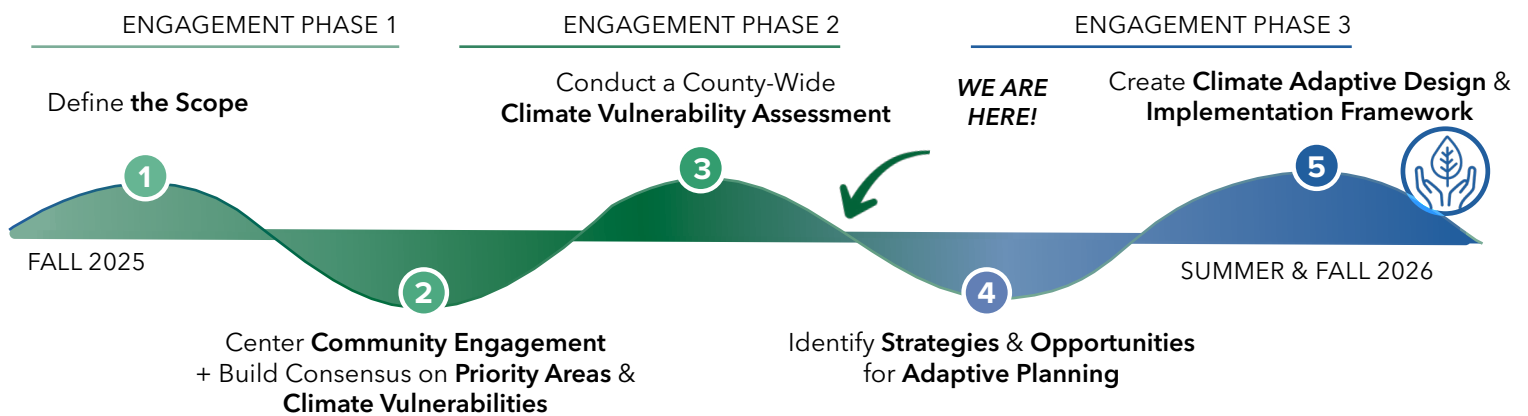


Why the CARP Matters

In recent years, Monroe County has experienced more severe storms, floods, public health emergencies, and other environmental and economic disruptions. From hotter summer days to harsher winter storms, these changes show that our climate is shifting, having physical, environmental, economic, and social impacts for our communities and ecosystems.

The **Climate Adaptation and Resiliency Plan (CARP) strengthens Monroe County's ability to prepare for, withstand, and adapt to the impacts of climate change.** The plan identifies the county's greatest climate-related hazards and outlines strategies to build resilience, especially for residents who are most vulnerable, since climate impacts are not felt equally.

Approach to the CARP

 There will be **five main phases** to the planning process, outlined below:

Learn More

To learn more about the CARP and opportunities to get involved, scan the QR code or visit: MonroeCountyClimateAction.com



Contact

Madison Quinn
Sustainability Coordinator
Monroe County Dept. Of Environmental Services
Sustainability@MonroeCounty.gov



ADAM J. BELLO
COUNTY EXECUTIVE



Monroe County

Climate Adaptation & Resiliency Plan

VULNERABILITY ASSESSMENT for Monroe County

Our Vulnerability Framework

The framework combines data + community experiences

Vulnerability = Exposure + Sensitivity - Adaptive Capacity

- ▶ **Exposure:** How often a climate hazard occurs
- ▶ **Sensitivity:** How strongly people are affected
- ▶ **Adaptive Capacity:** The ability to prepare, respond, and recover from climate hazards

Community Input



Over 400 residents took the Community Vulnerabilities Survey to share their lived experiences with climate hazards.



The Project Team received 17 Adaptive Capacity Questionnaires from County Agencies and Community Organizations to share information about emergency response and coordination capabilities.

Key Findings

- ▶ **Severe storms** are perceived as the biggest threat
- ▶ **Extreme heat** is a growing concern
- ▶ Many **people are unaware of the available resources** to help them respond to climate hazards and emergencies

Top 5 Climate Hazards



Severe Storms



Flooding



Severe Winter Storms



Disease Outbreak



Extreme Heat

What's Next?

The Vulnerability Assessment informs the upcoming Adaptation Planning Phase. Look for Monroe County DES at upcoming events to learn more about the CARP and share your feedback!

Upcoming Public Workshops

April 28, 6PM

Chili Community Center

April 29, 6PM

Webster Public Library

May 5, 5:30PM

Arnett Branch, Rochester Public Library

May 6, 6PM

Parma Library

May 7, 6PM

Perinton Community Center

Upcoming Pop-Up Events

April 25

Town of Gates Eco-Fest

Village of Honeoye Falls Environmental Fair

May 2

Town of Penfield EV Show + Arbor Day

May 9 & 16

Rochester Lilac Festival

Equity Matters!

Some people and communities, such as older adults, low-income households, people with disabilities, and minority communities, are more vulnerable and face greater impacts from climate hazards.

The CARP will incorporate equity into the plan to support the County's most vulnerable populations and ensure everyone can thrive in a changing climate!